



PARI INFRA

COMPANY PROFILE

ABOUT US



Pari Infra group made by a person who has got rich experience of Construction Services in all the fields over one decade, dedicated to the unwavering pursuit of excellence and innovation across the entire spectrum of infrastructure development Also developed his own manufacturing and fabrication units for PEB & AC DUCT with the Company Name of Pari Infra industries Pvt. Ltd. In Hyderabad & Delhi NCR.

- Diverse execution experience across sectors such as infrastructure, and related segment.
- Pari Infra involved & specialized in execution of CIVIL, PEB, MEP & All type of Interior and Decoration Work across the pan India.
- Pari Infra takes pride in the ability to provide solutions, to make things happen and to see projects through for satisfactory completion within budget & constrained time line. Having this ability has enabled us to become one amongst the leading construction companies
- Pari Infra has rich experience to execute the industrial, institutional & commercial projects across the nation



MISSION

To strategically grow the business by diversifying the services that we offer and by progressively expanding our operations across India.

Our mission is to provide high quality durable living and work spaces for today's for our consumer.

We will seek to use our imagination and the finest talents in the world to exceed all your expectations. To strengthen and grow to the leadership position by ensuring continual improvements in operational efficiencies, quality.



VISION

We understand that on-time delivery of material and expeditious execution is the essence for any project. To cater the growing demands and to meet all exigent techno-commercial procurement necessities we have in place a central procurement cell as well as our own internal procurement team to ensures speedy supply of any products/services/consumables.

We are confident to meet the job requirement and assure you of best quality always, at reasonable prices, backed by our assurance of on time & quality service.

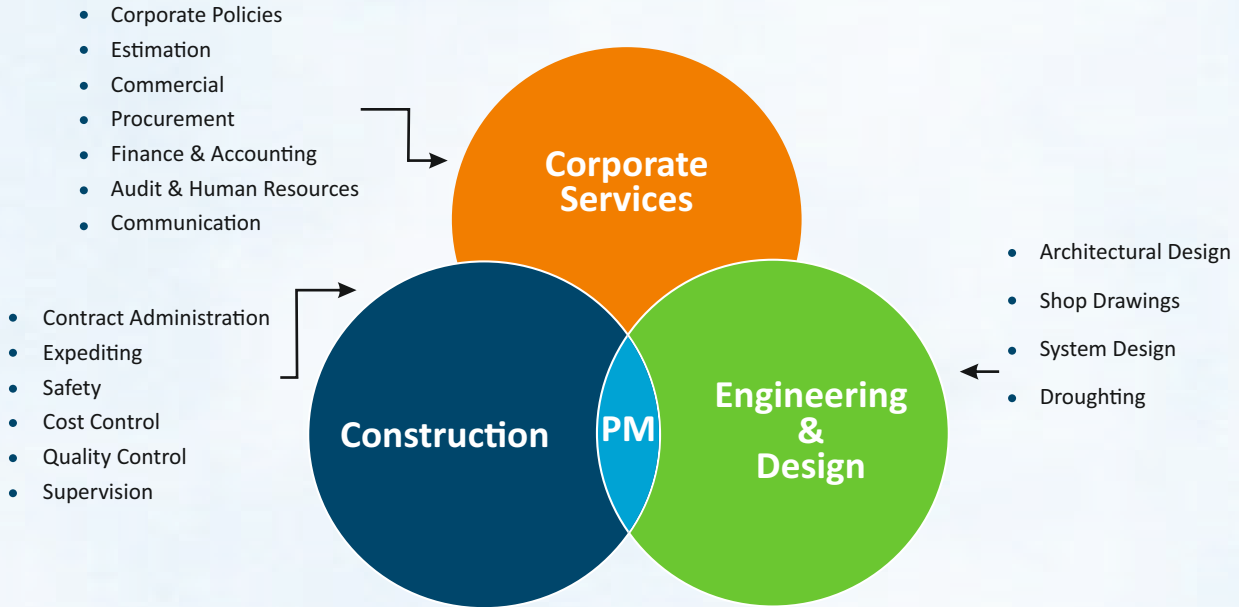


OUR VALUES

- Ability is the most valuable resource.
- Competitiveness through an advanced mechanism.
- Advanced technology and systems gives us competitive edge.
- Competitiveness is constant innovation.
- Quality is the soul of trust.
- Client's satisfaction is Our motto.
- Time is essence of contracts.
- Motivation and professional approach for each consideration.
- Man power is an asset to the organization.
- We are committed to Nation Building.
- We are committed to build green building



BUSINESS OPERATION



PROJECT MANAGEMENT



- | | | | | | |
|---|--|---|--|--|---|
| <ul style="list-style-type: none"> • Design and planning of projects/plans • Detailed design of mechanical and electrical component • Civil guide layout and general arrangement drawing | <p>Determination of all key component by:</p> <ul style="list-style-type: none"> • Technical specification • Interface definition and management • Supplier evaluation • Documentation | <ul style="list-style-type: none"> • Mainly party manufacturing • Manufacturing inspection • Long-term relationship with keys • Own process and product knowledge | <ul style="list-style-type: none"> • Lead engineering function construction • Erection of electromechanical • Control of key plant construction milestone • Knowledge of local market and partners • Reliable constructions partners • Other constructions activities such as civil works in all house | <ul style="list-style-type: none"> • Process knowledge and complex system interaction control • Detailed knowledge of plant and keys technology use • Start-up and test run | <ul style="list-style-type: none"> • Spare parts stocks and service management • Short reaction time in case of plant malfunction • Maintenance and schedules • Plant optimization • Operations applies in IWP project ONLY varies from one contract to others |
|---|--|---|--|--|---|

CNC Plasma Cutting Machine

CNC plasma cutting machine is equipped with plasma cutting heads and flame cutting torches, which is a high-efficiency and high-performance equipment. It adopts a gantry type, single drive or double drive, and can cut metal materials such as carbon steel, stainless steel, galvanized sheet, aluminum alloy, etc. CNC plasma cutting machine enabled to cut web, flange, connection plates, Base plates & other accessories items with the high speed & accuracy.

CNC plasma cutting machine can cut 1200MT material per month.



Pull Through Welding Machine



PTW Machine systems are used to automatically weld the Flange plate to a web plate to form a Pre-fabricated Beam with twin wire feed system & flux automated feed as well as recovery system. In this H beam steel placed on work piece support frame & piece is moved outwards to the machine with the help of conveyer after submerged arc welding.

This machine is mainly used for submerged arc welding of assembled H Beam.

PTW machine capacity is 1000 tons per month.



H BEAM FABRICATION MACHINE

H Beam Fabrication machine mainly consists of the host, input roller conveyor, output roller conveyor, hydraulic system, electrical control system, etc. It has the characteristics of precise positioning of workpieces, safety and stability, and improving production efficiency.

This machine is mainly used to fabricate H Beam in PEB with having capacity 1000 MT per month.



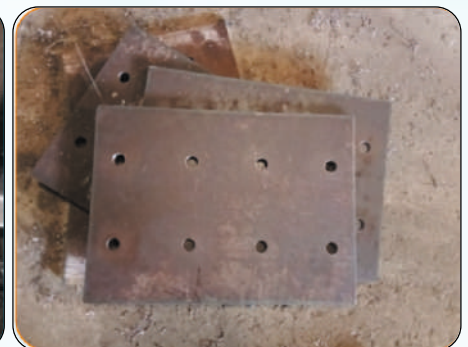
CNC Radial Drill Machine



CNC Radial drill machine is a type of drilling machine with a radial arm that allows the drill head to be positioned over a wide range of workpieces. This flexibility makes it suitable for drilling large or heavy parts, and parts with complex geometries. The machine typically has a heavy base, a vertical column, a radial arm that extends from the column, and a drill head mounted on the arm.

Radial drill machines are commonly used for drilling holes in Connection plates & base plates with mass drilling.

The machine can make maximum holes of 50mm dia. upto 45mm thick plate



Shearing Machine

The operation in shearing machine is done by motor driven pump which forces the oil in cylinder against piston. The piston movement energizes the ram which is holding upper knife. Hydraulic shearing machine are able to take longer strokes as compare to other derived shearing machine.

Shearing machines are used to cut sheet metal, plates, and bars by applying shear stress, essentially slicing the material along a predetermined line.

Machine capacity is 1mm-12mm thickness with 2500mm width range.



Sand Blasting Machine



Sand blasting machine assembly contains the air compressor, hopper, sand abrasive & hose pipe. For this sand blasting process, compressed air at tremendous velocity and pressure are presented on the blast wheel.

A sand blasting machine is principally used to eliminate rust, corrosion, and adulterant from the metal surface with the sustenance of abrasive media such as copper slag & sand.

Machine capacity is 1500MT in a month.



Purlin Machine

C & Z PURLIN MACHINE- C & Z forming machine have de coiler, flattening & guide system, forming system, hydraulic punching system & post cutter system guided by a control panel.

This machine is mainly used for to make C & Z section (Purlin & Girt).

Capacity of machine is 500MT in a month.



Profile Sheet Machine



Profile sheet roll forming machine consists of an automatic De coiler, feeding guide, roll forming unit, hydraulic cutter with PLC base control system. Highest output speeds up you 30-40 meters per minute results in at least 10-15 times higher production. Accuracy and consistency in shape & dimension can be achieved. Reduced delivery period to meet our production needs.

Capacity of machine is 500MT in a month



CNC Bending Machine

A CNC Bending Machine is an advanced, computer-controlled machine used for bending sheet metal into precise shapes and angles. It operates using a programmed control system that ensures high accuracy, consistency, and repeatability in every bending operation.

The machine uses a combination of punch and die tools along with hydraulic or servo-driven force to bend materials such as GI, MS, Stainless Steel, and Aluminum. With CNC technology, complex bending profiles can be achieved efficiently with minimal manual intervention.

Machine capacity is 400MT in a month.



Decking Sheet Machine



Deck sheet machine- Decking forming machine consists of de coiler and its base, coil sheet guiding equipment, roll forming system, post-cutting equipment, hydraulic station, PLC base controlling system, supporter table. The corrugated profile sheet produced by this machine has high strength with big rib, which adheres well to concrete.

Capacity of machine is 500MT in a month.



OUR PLANT

Manufacturing Capacity: 24000 MT Annually

Our state-of-the-art PEB manufacturing plant is a fully integrated, well equipped with latest machineries, software & ISO-certified facility specializing in high-precision steel fabrication. Equipped with advanced CNC plasma cutting machines and automated welding lines, we deliver products with standard quality compliance. Our facility prioritizes sustainability, utilizing steel and energy-efficient processes to provide eco-friendly, fast-turnaround construction solutions for industrial and commercial projects.

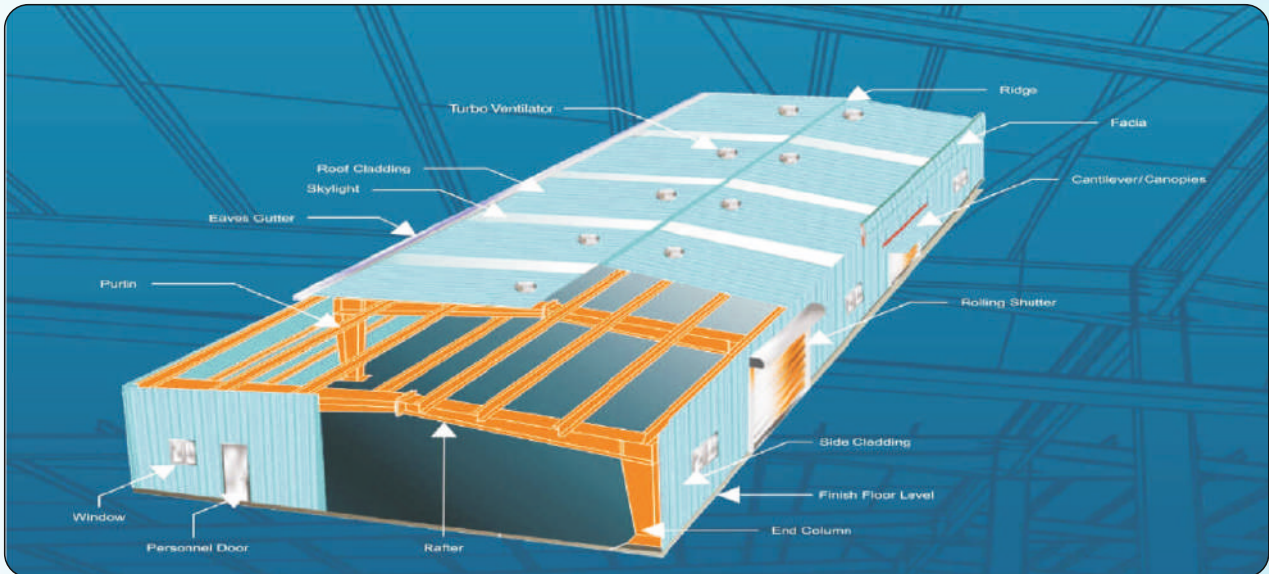


OUR SERVICES & PRODUCTS

Pre Engineered Buildings

The Pre-engineered buildings (PEB) facility allows the flexibility to fulfill unlimited range of building configurations, custom designs, requirements and applications.

A growing number of prominent international designers and contractors who had previously specified conventional structural steel buildings exclusively, have now discovered the PEB strength & approach. PEBs are more elegant in appearance, have free head roof area and enjoy more storage space.



Advantages

- Competitively Priced
- Quality And Innovation Assurance
- Provision For Easy Future Expansion
- Fastest Delivery Time & Speedy Erection
- Specialized Welding Quality
- Proven Experience
- Transported In Knock Down Condition
- Low Maintenance Cost
- Single Source Responsibility
- Shot Blasted
- No Welding Facility Required At Site
- Re-locatable And Re-workable
- Attractive Modern Appearance
- Manufactured In Specialized Production Facility
- Specialized Productive Coatings
- Insulated To Suit Various Weather Conditions
- Flexible Design To Accommodate Utility Lines For Plumbing, Wiring Etc.
- Ability To Withstand Seismic Forces



Types Of Frames



Clear Span



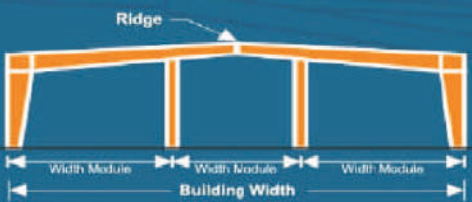
Lean To



Multi Span "1"



Mono Slope



Multi Span "2"



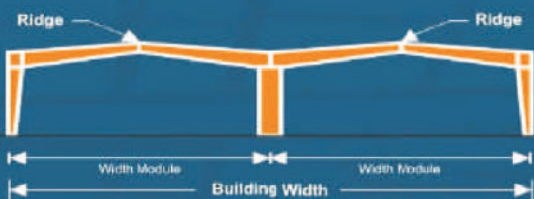
North Light



Multi Span "3"



Monitor Type



Multi Gable



Butterfly Canopy



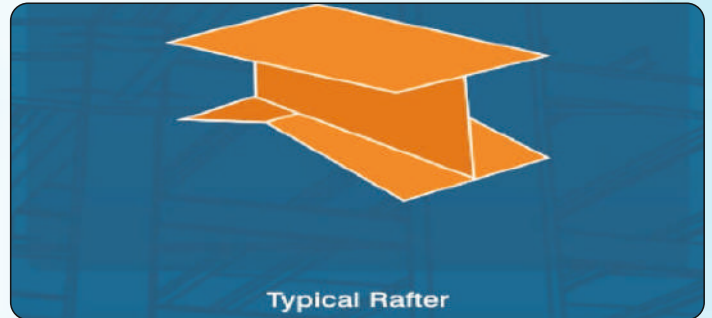
Product Categories

Pre-engineered buildings is a building system comprising of four distinct product categories-

- Primary built-up members
- Secondary members
- Roof and cladding system
- Building accessories

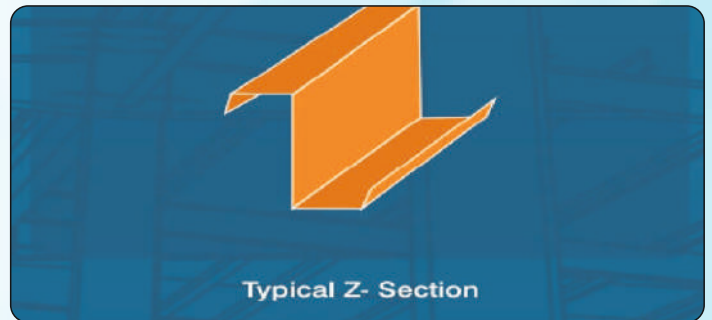
Primary Built-up Members

Built-up "I" shaped primary structural framing members (columns and rafters)



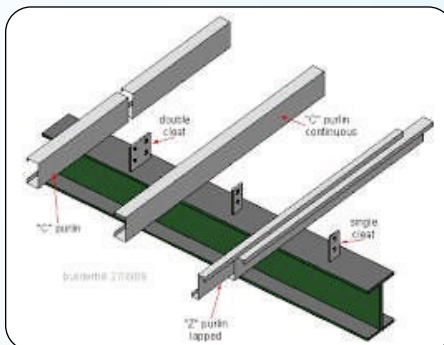
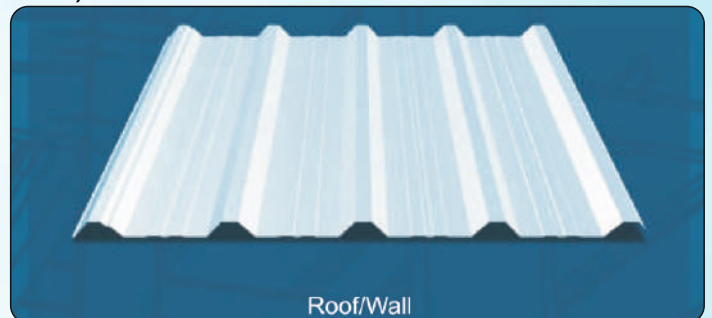
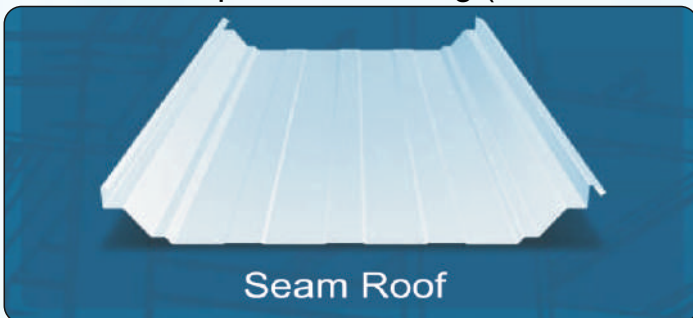
Secondary Built-up Members

Cold-formed "Z" and "C" shaped secondary structural members (roof purlin, eave struts and wall girts)



Roof and Cladding Systems

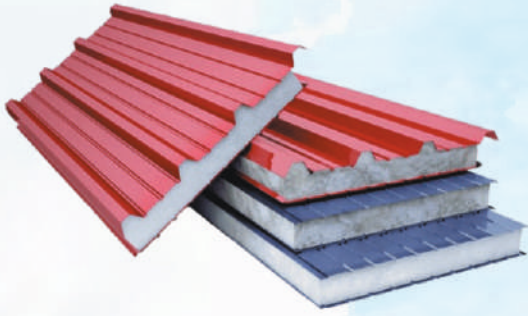
Roll formed profiled sheeting (roof and wall panels)



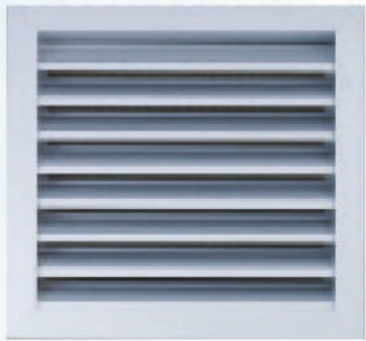
Common Accessories



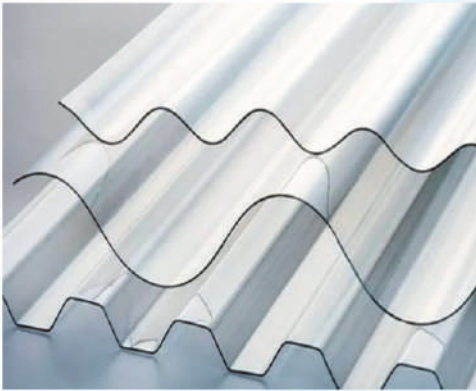
TURBO VENTILATOR



PUFF PANNEL



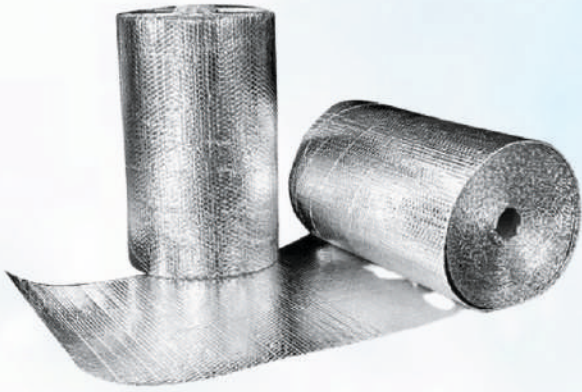
LOUVER



DAYLIGHT PANEL



Flashing



Insulation



Structural Steel

We are a company which provides innovative, economic and engineering solutions in India and across the globe. We are extending the Engineering service for pre-engineered steel buildings and structural steel in the areas of Design, Detailing and Estimation. Till now we have designed and detailed 1000+ jobs of various complexities in PEB and structural steel.

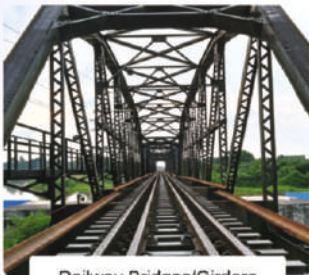
As a client centric firm, we strive hard to provide the services as per the demands of the clients thus, achieve complete client satisfaction. Our professionals work in close coordination with the clients and keep communicating with them on regular basis to know their exact needs and serve them accordingly.



Our Expertise:

- Pipe Racks
- Built-up Girders and Columns
- High-rise Buildings
- Equipment Support Structures
- Structural Steel Buildings
- Mining Infrastructure

Glimpse of Structural Steel



Railway Bridges/Girders



Cement Plants/ Steel Plants/
Power plants



Transmission/Telecom
Towers



Heavy Industries



Oil & Gas refineries



Petrochemical Plants



High Rise Buildings



Airport Terminal Structures



Design & Engineering

Design & Engineering Services


PEB Expert's team is experienced in design, manufacture and supply all kinds of heavy steel structures using Welded Beams, Hot Rolled sections, Paralled beams, Angles, Beams, Channels Pipes and Hollow Tubes by using its engineering expertises to design the most optimized steel structure with software such as STAAD PRO, AUTOCAD, BROCAD, ETABS, AUTODESK REVIT & ADVANCE STEEL AND TEKLA STRUCTURES.



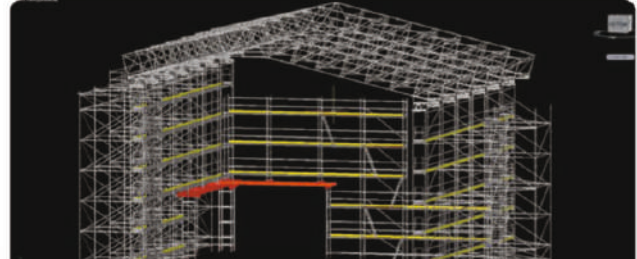
Out Outputs

- Proposal Drawings
- Anchor Bolt Plans
- Fabrication/ Shop Drawings
- Estimation
- Connection Details
- Shipper List of Bill of Material
- Design sketches
- Approval Drawings
- Erection Drawings

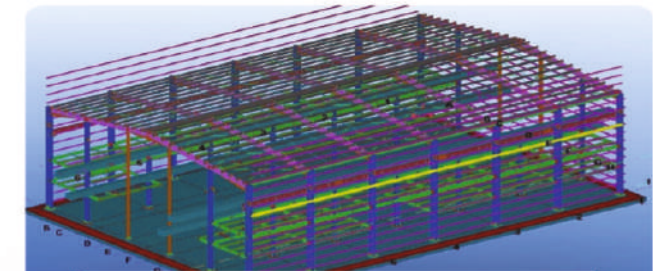
Our Softwares




Staad Pro



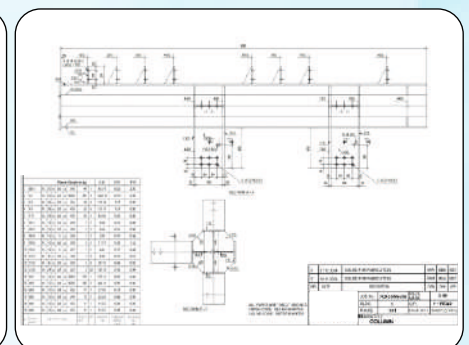
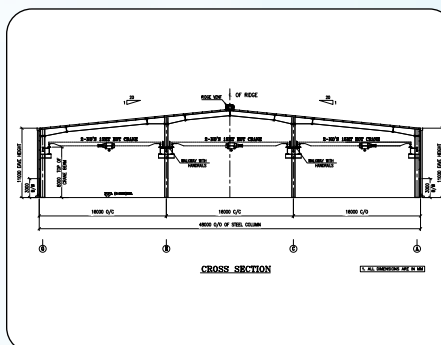
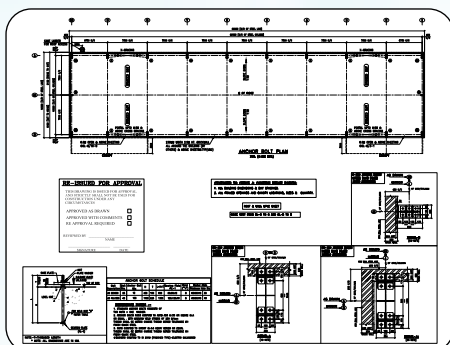
Auto CAD



Tekla X-Steel



MBS



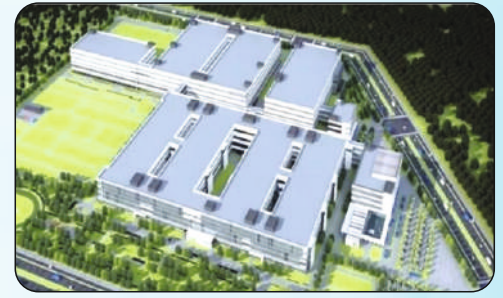
OUR PROJECTS



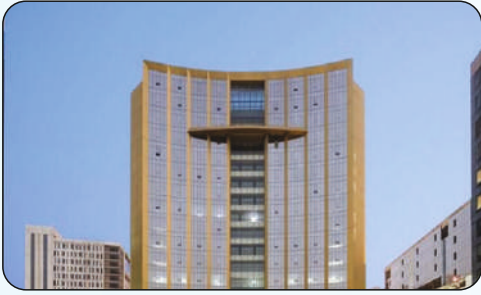
Project Name : FOXCONN
Location : Hyderabad, Telangana



Project Name : ATL Battery
Location : BAWAL, Haryana



Project Name : ATL Battery
Location : Sohna, Haryana



Project Name : Condor Tech Space
Location : Noida, UP



Project Name : E-SQUARE
Location : Noida, UP



Project Name : IICC Dwarka
Location : Delhi



Project Name : DLF Downtown
Location : Gurugram



Project Name : NIIT Technologies Ltd.
Location : Greater Noida, India



Project Name : Doon Square Mall
Location : Dehradun



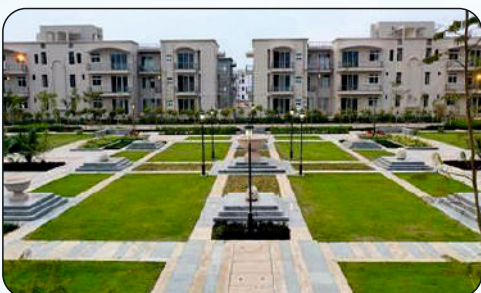
Project Name : Oppo Mobile
Location : Noida, UP



Project Name : Jubilant
Location : Noida



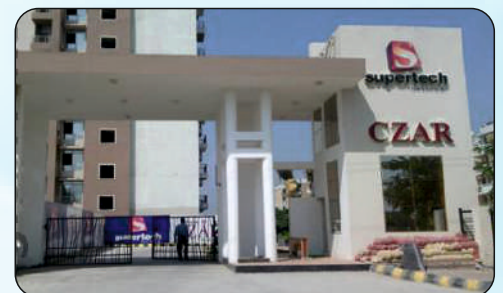
Project Name : Lulu Mall
Location : Lucknow



Project Name : Amstoria, BPTP
Location : Gurugram



Project Name : Micasa Supertech
Location : Bangalore



Project Name : CZAR Suites
Location : Noida, UP

EHS POLICY

Environmental Commitments

- Protect and preserve the environment through responsible operations.
- Minimize waste and promote efficient use of resources.
- Reduce the use of harmful substances such as CFCs and hazardous materials.
- Promote environmentally responsible construction and operational practices.
- Regularly monitor environmental risks and take corrective actions.
- Comply with all applicable environmental laws and regulations.

Health & Safety Commitments

- Provide a safe, healthy, and hygienic workplace for employees and stakeholders.
- Prevent accidents, injuries, and occupational illnesses.
- Maintain safe machinery, equipment, and workplace facilities.
- Ensure safe handling, storage, and use of materials.
- Provide safety training, induction programs, and proper supervision.
- Supply and enforce the use of Personal Protective Equipment (PPE).

Responsibilities

- Management is responsible for implementing and monitoring EHS policies.
- Employees must follow safety procedures and cooperate in maintaining safe conditions.
- The policy will be reviewed regularly to ensure continuous improvement and compliance.



CERTIFICATIONS



QUALITY & POLICY STATEMENT

Pari Infra firmly believes that our systemic and business processes, professionally followed and well accomplished by our enthusiastic staff, clearly indicates our care and continuance in providing high levels of our quality works, customer service and customer satisfaction.

Pari Infra strives to consistently providing quality engineering with reliable and efficient maintenance services, subject to total compliance on all its requirements, and where possible exceeds the expectations of our customers.

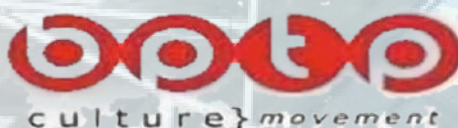
Pari Infra focuses on training and development of its personnel through flexibility and adaptability to service the overwhelming transforming business environment, by innovative working techniques and continuously improve the efficacy of our design and building management systems.

We will ensure that all our staff having good knowledge and understanding of our quality objectives, working towards meeting the system requirements, and committed to developing processes and promoting new ideas. To address and achieve and ongoing progress in quality service and customer satisfaction, Pari Infra will maintain, review and revise its quality objectives and targets annually

Pari Infra will conduct quality audits and reviews on all operational activities at least once a year, and will allocate human, financial and other recourses appropriately in order to achieve targeted results.

Currently, Pari Infra is committed with established quality management system, both administrative and operational, to work towards continuous improvement on its quality performance.

OUR CLIENTS



BLUE STAR



North Zone Office:

217, 2nd Floor, B- Block
Noida One, Sector-62, Noida,
Uttar Pradesh - 201301

Plant Address

Khasra no. 235, Beel Akbarpur, Dadri
Bypass Road, G.B. Nagar, UP - 201310

South Zone Office:

217, 2nd Floor, Raichandani Business
Bay Main Road Gandipet, Kokapet
Hyderabad, Telangana 500075

Plant Address

Plot No-04, IP Buchinelly Zaheerabad
Sangareddy, Telangana - 502228

Website: www.pariinfraindustries.com, www.pebexpert.com, www.ducttech.co.in

Email : info@pariinfraindustries.com, pariinfra2@gmail.com

Mobile No.: +91 9220905636, +919220905633